



WORLDWIDE ELECTRIC MOTOR DATA SHEET



PEWWE3-12-213TC

HORSEPOWER	3		
RPM / POLES	1200 / 6		
VOLTAGE / PHASE	230 / 460 V / 3		
FRAME	213TC		
ENCLOSURE / DEGREE OF PROTECTION	TEFC / IP55		
FREQUENCY	60 HZ Suitable For 50 HZ Operation With 1.0 SF		
FULL LOAD SPEED	1175 RPM		
SERVICE FACTOR	1.25		
INSULATION CLASS	F		
FULL LOAD AMPS; 230 / 460	8.97 / 4.48 A (Usable On 208V At 9.92 A)		
LOCKED ROTOR AMPS (STARTING); 230 / 460	64 / 32 A		
NO LOAD CURRENT	5.2 / 2.6 A		
NEMA CODE LETTER	K		
EFFICIENCY / POWER FACTOR	<u>LOAD</u>	<u>EFF.</u>	<u>P.F.</u>
	100 %	89.5%	0.70
	75 %	89.5%	0.65
	50 %	88.2%	0.53
DUTY CYCLE	S1 / Continuous		
TORQUE	<u>FULL LOAD</u>	<u>LRT</u>	<u>BDT</u>
	13.4 lb.ft.	155%	240%
SLIP	2.08 %		
NEMA DESIGN	B		
MOMENT OF INERTIA	0.678 lb.ft. ²		
MAX. TIME LOCKED ROTOR (Hot)	24 Seconds		
SOUND PRESSURE LEVEL	64 dB (A)		
MAX. AMBIENT TEMPERATURE	40° C		
MAX. ELEVATION	3300 Ft.		
TEMPERATURE RISE (At Full Load)	80° C		
DE BEARING	6308ZZ C3		
ODE BEARING	6207ZZ C3		
REGREASING INT. - DE BEARING	---		
REGREASING INT. - ODE BEARING	---		
GREASE TYPE	SKF LGHP 2		
MOUNTING	F1 (F2 Suitable)		
ROTATION	Bi-Directional		
SHAFT MATERIAL	1045 Carbon Steel		
INVERTER RATING	10:1 CT / 20:1 VT PWM Type		
CONNECTION DIAGRAM	230 / 460 V - 9 Lead Y		
AREA CLASSIFICATION	Class I, Division 2, Groups A, B, C, D		
APPROXIMATE WEIGHT	166 lbs.		



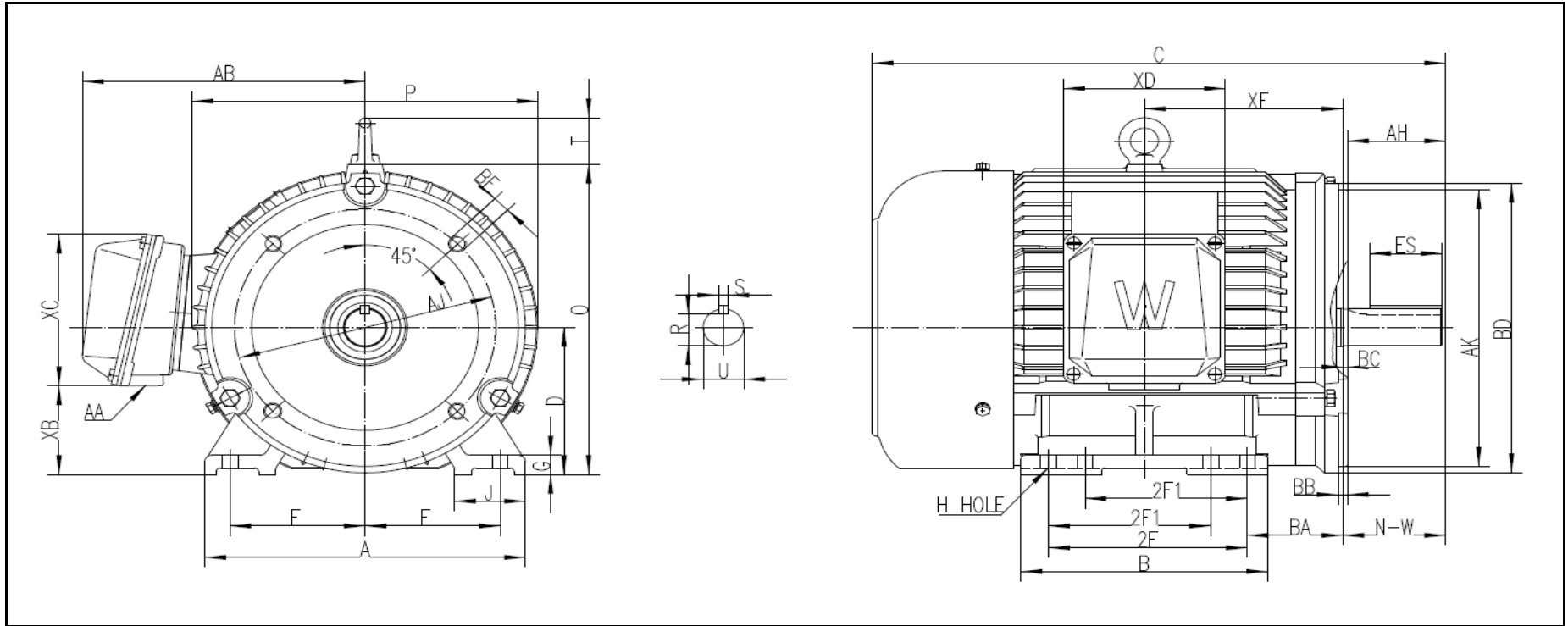
CC006A





WORLDWIDE ELECTRIC MOTOR DRAWING

PEWWE-213TC



DIMENSIONS - INCHES

MOUNTING					A	B	C	D	G	J	P	O	T	AB
E	2F1	2F2	H	BA										
4.25	---	5.5	0.41	3.5	10.5	7.5	18	5.25	0.71	2.4	10.4	10.6	1.73	8.5

KEY		KEYSET	FLANGE				SHAFT		TERMINAL BOX					
S	ES	R	AK	AJ	BF	BB	BD	N-W	U	AA	XB	XC	XD	XE
0.312	2.41	1.201	8.5	7.25	1/2 - 13	0.25	9	3.38	1.375	1	3.3	5.1	4.6	6.25

REVISED - 03/30/18

PERFORMANCE CURVES

WorldWide Electric Corporation

1 (800) 808-2131

Worldwideelectric.net

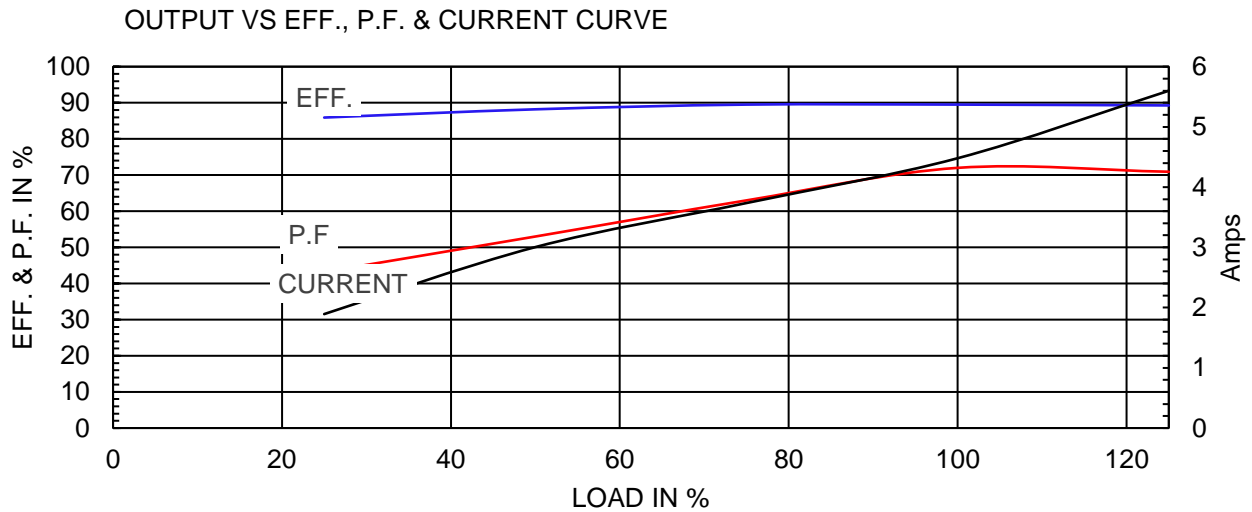
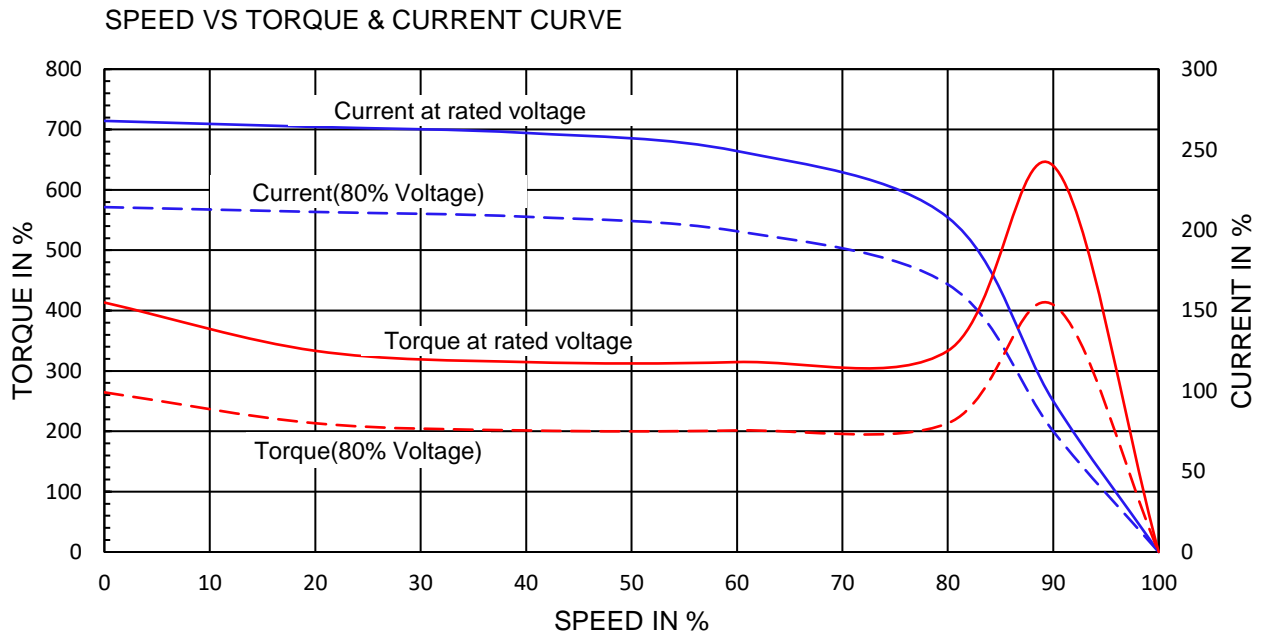


Premium Efficiency Motor:

PEWWE3-12-213TC

Document Generated:	25-Jun-2020	Customer:	
Document ID:			

Motor Type	PEWWE				
Output Rating (HP)	3	FL Speed	1180		
Full Load Torque	13.3 lb.ft	LRT (%FLT)	155	460 volt FLA	4.48
Rotor Wk ²	0.646 lb-ft ²	BDT (%FLT)	240	230 volt FLA	8.97A



NAMEPLATE / WIRING

WorldWide Electric Corporation

1 (800) 808-2131

Worldwideelectric.net



Premium Efficiency Motor: **PEWWE3-12-213TC**

Document Generated: 24-Sep-2019
Document ID:

Customer:

SAMPLE NAMEPLATE DATA

		PREMIUM EFFICIENCY 3-PHASE INDUCTION MOTOR		CC006A ISO9001	259277
Model	PEWWE3-12-213TC	Ser No.	ZP		
HP	3	S.F.	1.25	Type	Encl
Frame	213TC	P.F.	0.72	Ins Cl	TEFC IP55
Voltage	230/460	Hz	60 Hz	Design	Rating
Amps	8.97A / 4.48A	RPM	1180	Code	40°C Amb Cont
Nom.Eff.	FL 89.5 %	3/4	89.5 %	230/460V	DE Brng
Usable on 208V network at 10 Amps 1.0SF		Class I DIV. 2 Groups A B C D		Amb.40°C	T3C(160°C)
10:1 CT 20:1 VT PWM VFD 1.0SF		Class I Zone 2 IIC		Amb.55°C	T3A(180°C)
50Hz 3 HP 200/400 V V 11. / 5.6 A 970 rpm S.F1.0					
WorldWide Electric Corporation					

Low Voltage

4—5—6

7 8 9

1 2 3

L1 L2 L3

High Voltage

4 5 6

7 8 9

1 2 3

L1 L2 L3

